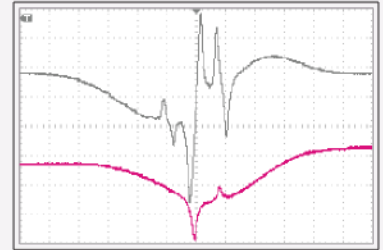
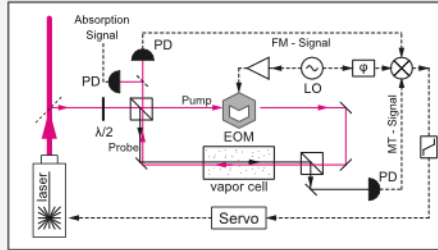


# Applications for Electro-Optic Phase Modulators

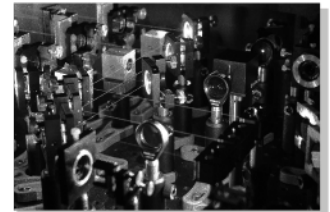
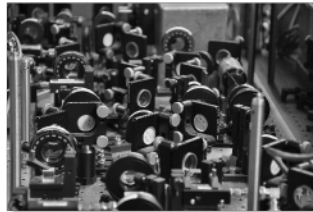
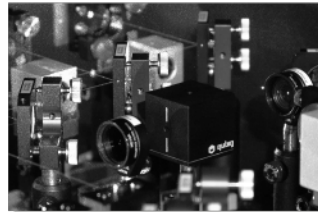
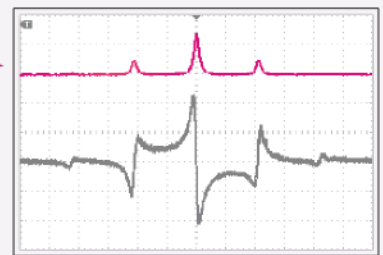
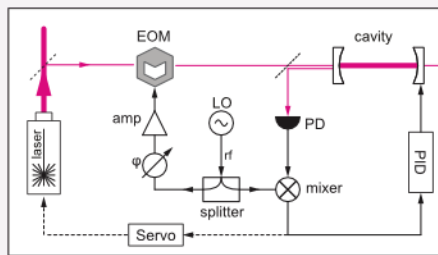
## FM - / MT - Spectroscopy

- 1 - 20 MHz (typ.)
- high Q resonance (fixed & tunable)
- broadband versions available
- outstanding modulation efficiency
- low drive power
- large aperture for easy alignment
- for s- and p-polarization



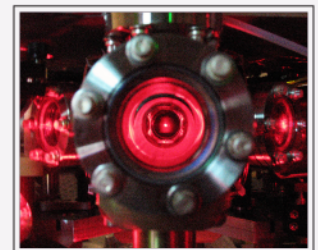
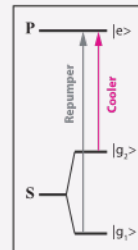
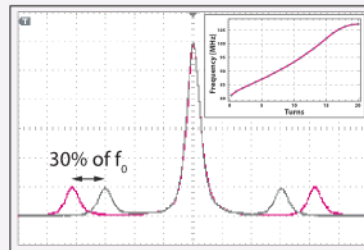
## Pound-Drever-Hall Lock

- 20 - 300 MHz (typ.)
- high-Q resonance (fixed & tunable)
- low drive power
- low residual amplitude modulation (RAM)
- cooling options available
- wide range AR coatings (UV - IR)
- large aperture



## Element Specific EOM

- **Li-6** 230 (MHz)
- **Li-7** 810 (MHz)
- **Na-23** 1730 (MHz)
- **K-39** 460 (MHz)
- **K-40** 1240 (MHz)
- precisely adjustable resonance frequency
- wide tuning range
- high damage threshold
- specific AR coatings ( $R < 0.1\%$ )
- large aperture for easy alignment



## High-Power EOM

- high damage threshold
- large crystal sizes (5mm aperture)
- low wavefront distortion
- single line AR coatings ( $R < 0.1\%$ )
- active / passive cooling options
- high-Q resonance (fixed & tunable)
- high RF power up to 10W

